

WELDING POSITIONERS

With spindle bore

D-DWP



D-DWP-100

UMETA
fast. safe. easy.



WELDING POSITIONERS

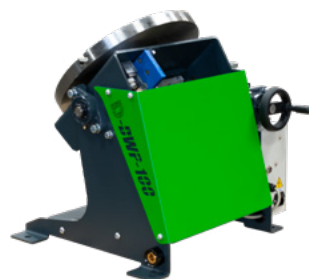
With spindle bore

D-DWP



D-DWP-100

Strong and durable machine with spindle bore.



The welding positioner D-DWP is equipped with a spindle bore, which provides the operator with the possibility to use backing gas. Through the use of the welding positioners the production rate can be increased and the product quality further enhanced.

The compact design will also decrease the normal usage of your floor space. The small models can be widely used for instance as a tabletop model.

The D-DWP series is currently available with a capacity of 100 kg, 300 kg and 500 kg. However, we are also able to deliver custom made positioners according to your specific requirements.

FEATURES

- Spindle bore
- Compact model
- Stepless adjustable speed
- High stability due to durable construction
- CE marking
- Favourable price-performance ratio
- Foot pedal

OPTIONAL

- Foot pedal for adjustable speed
- Clamping means
- Radio remote control



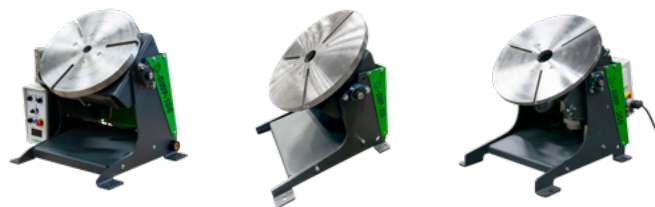
D-DWP-500



WELDING POSITIONERS

With spindle bore

D-DWP



Technical specifications

Model	D-DWP-100	D-DWP-300	D-DWP-500
Max. load (kg)	100/50	300/150	500/250
Table (Ø mm)	350	490	690
Spindle bore (Ømm)	30	65	100
Rotation speed (rpm)	0,5-5	0,5-3,2	0,2-1,9
Tilting function	Manually	Manually	Electrical
Tilting angle (°)	90	90	90
Max. centre gravity (mm)	250	250	250
Max. eccentricity (mm)	150	150	150
Max. torque table (Nm)	150	375	1200
Max. torque tilting (Nm)	-	-	1500
Motor power rotation (kW)	0.2	0,2	0,37
Max. welding current (A)	500	500	500
Power supply	230V, 50Hz	230V, 50Hz	400V,50Hz
Foot pedal	start-stop	start-stop	start-stop/left-righth
Remote control (by wire)	Optional	Optional	Included



All information (technical data, product colours) is subject to printing-, type errors and modifications.