



SIR MECCANICA S.p.A.

Portable Multifunction Machine Tools



MADE IN ITALY





SIR MECCANICA S.p.A.

Portable Multifunction Machine Tools



MADE IN ITALY



SIMMECCANICA

35

YEARS OF EXPERTISE

Since 1991, Sir Meccanica has been designing and manufacturing portable multi-function machine tools, synonymous with quality and innovation. Thanks to our technologically advanced solutions, we reduce machine downtime by up to 95%, optimizing business performance.

Our machines are distributed worldwide, and thanks to our highly qualified team, we guide the industry towards excellence.

We manufacture portable machine tools that enhance the quality of production processes, reducing costs and increasing overall productivity.

By offering tailor-made solutions for every need, we are the strategic partner for your technological-industrial evolution.



18.700

MACHINES SOLD

The 18,000 m² total surface area and 4,800 m² covered area of our plant are energy self-sufficient, powered by solar panels that fuel the entire production cycle. Rigorous quality controls and cutting-edge technologies ensure constant excellence and innovation in our products.



223.000 KG
LESS CO₂ EMISSIONS



6.661
EQUIVALENT NUMBER
OF TREES PLANTED



60

MACHINE TOOLS

With over 60 machine tools for production, including state-of-the-art 5-axis CNC machining centers and 7-axis multitasking turning centers, we create complex geometries with maximum precision.

The integration of 3D CAD and CAM software not only optimizes machining times but also allows us to perform detailed FEM analysis to ensure the durability and reliability of our products. The machine park includes:

- ◆ **CNC MACHINING CENTERS AND LATHES**
- ◆ **AUTOMATED AND ROBOTIC SYSTEMS**
- ◆ **WIRE EDM AND LASER CUTTING MACHINES**
- ◆ **PRESS BRAKES AND PRECISION EQUIPMENT**

Metal Surface Treatment

Our Metal Surface Treatment Department is responsible for completing all the components produced, whether they are made of steel or aluminum. Thanks to chemical processes such as phosphating and anodizing, our technicians improve the mechanical surface characteristics of the metals used in production, allowing for increased resistance to corrosion, increased resistance to wear and abrasion, increased hardness and consequently an increased life of the components themselves.

THE PATH TO INNOVATION

A History of Certifications and Patents

Investing in Research and Development is essential to solidify and strengthen our leadership in the portable machine tools industry, where we create unique products. Every investment we make is aimed at transforming innovative ideas into concrete solutions that generate value for both the company and our customers, offering cutting-edge solutions that make a difference by anticipating market developments. The projects we develop are protected by our international patents, which safeguard not only the originality of our technologies but also the commitment and resources invested in bringing them to life. For us, patents are the guarantee of a future built on innovation and excellence.



**NATO Code
NCAGE A FA74**

certifying the company's recognition as an official supplier of materials and services to the U.S. government and U.S. bases in Europe.

2006



CE N° IMQ 192 Rev.1

certifying that the Ws series complies with CE directives.

2007

Our Management System has been resulted in compliance with the standard **UNI-EN-ISO 9001:2015**, for the following fields of activities: Design and manufacture of multifunction machine tools.



CERTITALIA No. E14817-R3

2009

EAC

EAЭC N RU Д-IT.РА01. B.67465/21, certifying that the Ws series complies with the technical standards of the Russian Federation.

EAЭC N RU Д-IT.РА01. B.67471/21, certifying that the Fmax series complies with the technical standards of the Russian Federation.

2021

2014

ADM - AUTHORIZED EXPORTER STATUS No. IT/001/CZ/14.



Our Management System for Gender Equality has been resulted in compliance with **UNI/PdR 125/2022, Certificate n. PG2545.**

2023

2024

LEI No. 81560006FFD353966B11 the Legal Entity Identifier (LEI) is used to identify financial transactions worldwide, in all markets and legal systems.



2025

DUN & BRADSTREET D-U-N-S® No. 442180162, is a global identification standard that certifies the reliability and/or financial stability of our company.

dun & bradstreet



SHIPYARD

Our extensive range of portable machine tools, resulting from innovation and careful research in the shipyard sector, is ideal for the construction of rudder housings and turbine repairs, as well as for machining on stern tubes, propulsion engines, and gearboxes (etc.).



EARTH MOVING

Our portable multifunction machine tools are lightweight and compact, bringing technology directly to the field, enhancing operational efficiency and flexibility. Our wide range allows for on-site restoration of worn holes in buckets, arms, pistons, and, more generally, the joints of earth-moving machines such as excavators, backhoe loaders, dumpers, dozers, and bulldozers.



INDUSTRIAL

In the industrial sector, we specialize in designing machines that meet the maintenance and assistance requirement of any plant, as they are designed for timely interventions directly on-site on large machinery (presses, shears, etc.), plants, and transmission systems, as well as for the construction and restoration of bearing housings, bushings, and mechanical seals.

NUCLEAR

The versatility of our commitment guarantees effective, precise, and safe solutions, essential for the maintenance and efficiency of plants in such a critical and sensitive field as the nuclear sector. The use of the most sophisticated technologies and the excellence of our production allow for the creation of special equipment for delicate interventions such as the maintenance and repair of nuclear plants, piping, and the restoration of reactor stud locations.



OIL & GAS

Our machine tools are essential for the maintenance and repair of thermoelectric plants, oil pipelines, gas pipelines, and refineries. Ideal for pipe joining and work on large components that are difficult to replace, such as valves, flanges, and hydraulic systems, they maximize efficiency and reduce downtime, confirming our commitment to innovation and effectiveness in the sector.

RAILWAY

In the railway sector, our machines are used in the maintenance and repair of axles, rolling stock, and the housing of bogie bearings. Our approach is based on the solid know-how of the technical team, whose continuous training ensures precise and unconventional solutions, essential for the maintenance and efficiency of the rolling stock.





38

DEALERS



156

COUNTRIES



24 HOURS **7** DAYS



WARRANTY

Our machines are covered by a comprehensive 24-month warranty on all mechanical and electronic components. Moreover, all consumable parts are available in our warehouse or in any local market.



CUSTOMER SUPPORT

Dealers and customers can access advanced technical support and multilingual online assistance 24/7 for quick and personalized responses. The reserved area on our website gives the possibility to request quotes for machines, spare parts and repairs, and track a shipment.



TRAINING

Although the use of our machines is simple and intuitive, thanks to the user and maintenance manual with clear instructions in 7 languages, detailed steps, and colour photos, we also offer free training, customizable according to the customer's requirements.



8

SERIES



WS

- ◆ IN-LINE BORING
- ◆ OVERLAY WELDING
- ◆ TAPPING
- ◆ DRILLING



TOP

- ◆ ALL GEOMETRIC PROFILES
- ◆ STANDARD AND TAPERED THREAD
- ◆ SIMPLE AND SHAPED FACING
- ◆ MULTI-LEVEL CYLINDRICAL GROOVES



RSX9

- ◆ IN-LINE BORING FOR LARGE BODIES WITH CYLINDRICAL CAVITIES



RW

- ◆ OVERLAY WELDING



WS FULL CNC

◇
CURVILINEAR PROFILES

◇
CONICAL MACHINING

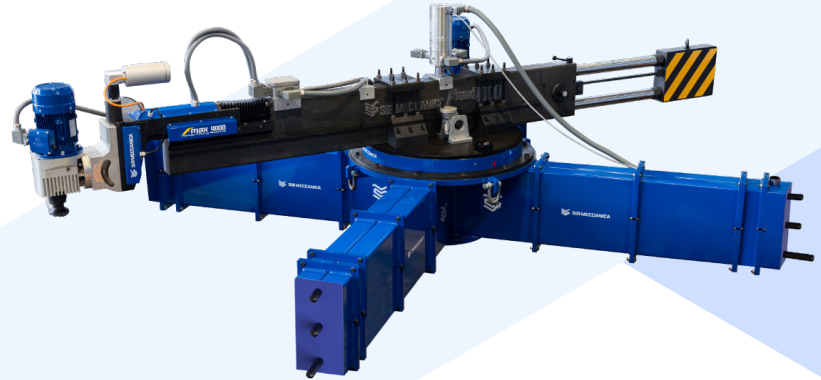
◇
BEVELLING AND CHAMFERING OF ANY KIND

◇
ALL TYPES OF THREADING

◇
FACING OF SIMPLE AND COMPLEX PROFILE SURFACES

◇
ANY TYPE OF GROOVE

◇
PHONOGRAPHIC SCORING



FMAX

◇
GENERAL FACING

◇
MILLING

◇
GROOVING

◇
CHAMFERING

◇
DIE SINKING MACHINING

◇
BEVELING



WTMAX

◇
THREADING



SM

◇
LINEAR CUTTING



95%

TIME SAVED

◆ **WIDE RANGE OF APPLICATIONS**

Sir Meccanica portable machine tools are designed to offer extreme versatility and are applicable in a wide range of industrial sectors.

◆ **ELIMINATION OF TRANSPORTATION AND MACHINE DOWNTIME COSTS**

Thanks to the portability of our machine tools, all operations can be performed directly on-site, eliminating the need to disassemble, transport, and repair equipment in a specialized workshop, thus removing transport costs and machine downtime.

◆ **REDUCTION OF MACHINING TIMES AND LABOR COSTS**

Operating in any position, our multifunction machine tools are ideal for the repair and maintenance of all tubular bodies. Easy to use, even by non-specialized operators, they reduce machining times by 95% thanks to their semi-automatic mode. The reduction in labour costs also makes the investment quickly amortizable.

◆ **SAFETY AND PERFORMANCE RELIABILITY**

Each machine is equipped with a control panel with a display, allowing the operator to constantly monitor the entire machining process, ensuring high performance and operational safety at every stage.

◆ **CUSTOMIZATION**

Our Research and Development Department creates customized solutions to meet the specific needs of each customer, guaranteeing tailor-made technological production and design.



WS SERIES

Portable Multifunction Machine Tools

The Ws series consists of eight models of portable in-line boring and overlay welding machine tools. Each individual machine operates on different diameters, performing, with extreme precision, the on-site repair of holes and joint points of large and small equipment, whose dismantling would involve machine downtime and transportation to a specialized workshop.

Moreover, the WS series features a patented rotation transmission system that ensures high performance and efficiency, thanks to the worm gear – helical wheel reducer.



W SMALLER

Ø 22MM - Ø 70MM (0.87" - 2.75")



WS2 COMPACT

Ø 22MM - Ø 400MM (0.87" - 15.75")



WS1 PLUS

Ø 22MM - Ø 180MM (0.87" - 7.09")



WS2 STANDARD

Ø 22MM - Ø 400MM (0.87" - 15.75")



WS3

Ø 32MM - Ø 800MM (1.26" - 31.50")



WS2 PLUS

Ø 32MM - Ø 450MM (1.26" - 17.72")



WS5

Ø 180MM - Ø 1000MM (7.09" - 39.40")



WS7 PLUS 3PH

Ø 400MM - Ø 1700MM (15.75" - 66.93")

WS ELECTRONIC CONTROL PANEL

The electronic control panel guarantees perfect management of the individually tested and magnetized motors, for a constant and linear motion that ensures high quality performance. At Sir Meccanica we have developed a special electronic control panel for the Ws series, which ensures that the power of the machine is maintained in any application situation, where linearity of motion, overload capacity and high inertia management are required. The main features of the control panel include:

- ◆ **VOLTAGE 110 - 230 V ~ 50/60 HZ**, with automatic selection of the mains voltage
- ◆ **ESPS® (ELECTRONIC SYNCHRONIZATION POWER SYSTEM)**, the electronic operating torque of the two motors is designed for electromechanical synchronisation
- ◆ **ACOUSTIC WARNING AND STATUS DISPLAY** with coded signals, to detect and identify any faults during operation of the rotation and of the feed motors

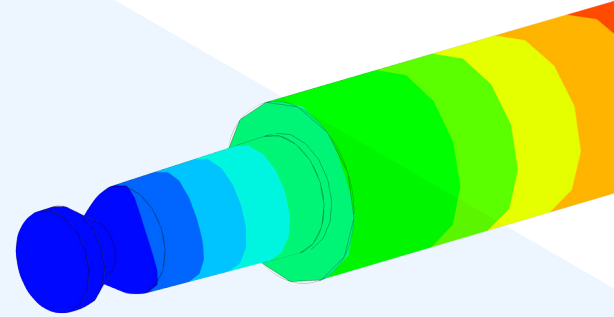


- ◆ **DISPLAY** to monitor the feed and rotation motor revolutions
- ◆ **BUTTON FOR RAPID SHAFT TRANSLATION**
- ◆ **EMERGENCY BUTTON ON THE CONTROL PANEL**, in compliance with CE directives
- ◆ **ST.P. BAR** with indication of the immediate workload of the rotation motor, that allows to optimize the working parameters (rotation and feed speed) based on the hardness of the material, the type of tool mounted, the working diameter and the quantity of material removed by the tool
- ◆ **NO WELDING POINTS ON ELECTRICAL CONNECTIONS**, which simplifies technical intervention, even for non-specialized personnel

CONNECTABLE SHAFTS WITH CONICAL COUPLING

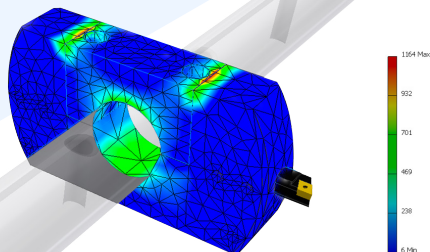
The **TOOLHOLDER SHAFTS** are the result of our research, aimed to ensure that precision joints are resistant to stress. In particular, our Research and Development Department has conducted studies on the locking methods of conical coupling, used to assemble moving and stationary parts capable of transmitting high torque, or to join thin axial components that are developed in length and able to withstand high bending and torsional moments. Perfectly adaptable to both minimal and infinite machining lengths, the patented system is composed of various modular components of different measures that, assembled together, can reach the required distances. The key advantages of our shafts are:

- ◆ **IMMEDIATE COUPLING AND UNCOUPLING, FOR CONTINUOUS ASSEMBLY AND DISASSEMBLY**
- ◆ **PRECISION AND QUALITY IN COAXIAL ALIGNMENT UNDER ANY STRESS CONDITIONS**
- ◆ **EXCELLENT CONTROL OVER INTERFERENCE LEVELS BETWEEN COUPLED SURFACES**
- ◆ **RESISTANCE TO WEAR AND STRESS OVER TIME**
- ◆ **HIGH TORQUE TRANSFER CAPABILITY**
- ◆ **INCREASED SAFETY COEFFICIENTS**
- ◆ **INTERCHANGEABILITY**



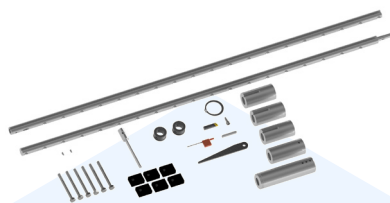
TOOL HOLDERS WITH RAPID COUPLING

Our tool holder extensions, solid and reliable, can be moved, inserted, and removed with great ease, without the need to remove the shaft from the machine body. Extremely practical and strong, made from a special anodized aluminium alloy, they allow for smoother and more consistent machining, minimizing vibrations and increasing the precision and longevity of both the tool and and, consequently, the machine.



WS KITS

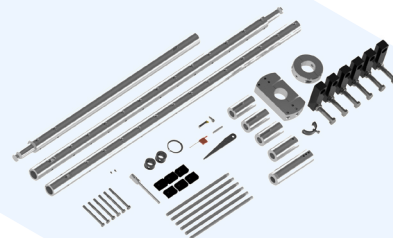
SERIES



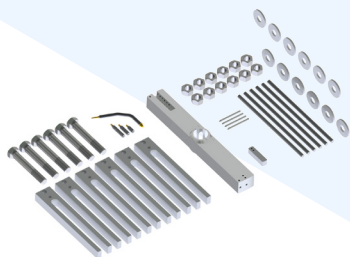
KIT 20



KIT 30



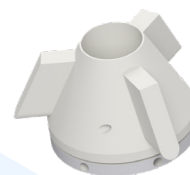
KIT 250



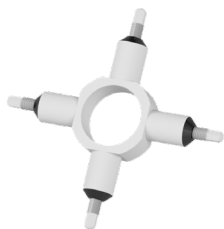
KIT 800



KIT 2000



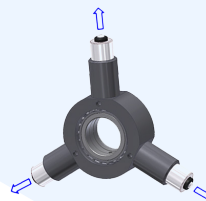
CENTERING CONES



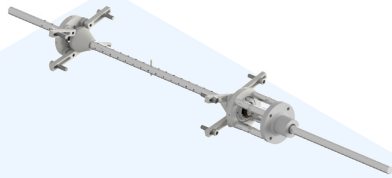
EXPANDING CENTERING RING



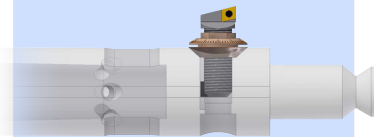
**CENTERING KIT WITH
REMOVABLE RINGS**



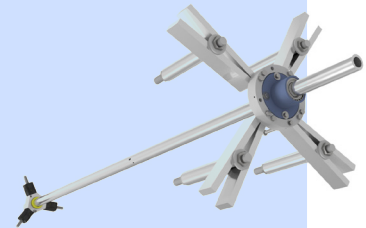
INTERNAL SUPPORTS



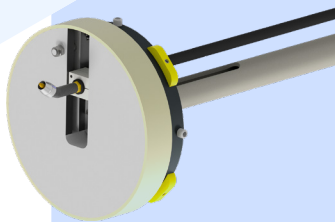
ENGINE BLOCK KIT



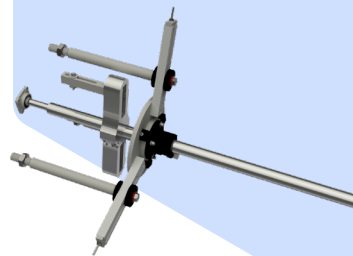
**MICROMETRIC TOOL
HOLDER**



CYLINDER ENGINE KIT



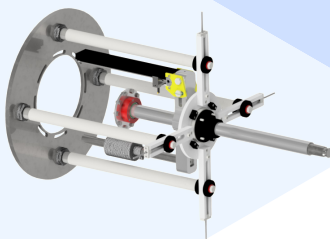
ORTOGONAL WELDING KIT



EXTERNAL TURNING KIT



**ELECTRONIC POSITIONER
DISPLAY SCREEN**



**KEW - MOTORIZED
EXTERNAL TURNING KIT**



**ANCHORING CAGES WITH
CENTESIMAL ADJUSTMENT**



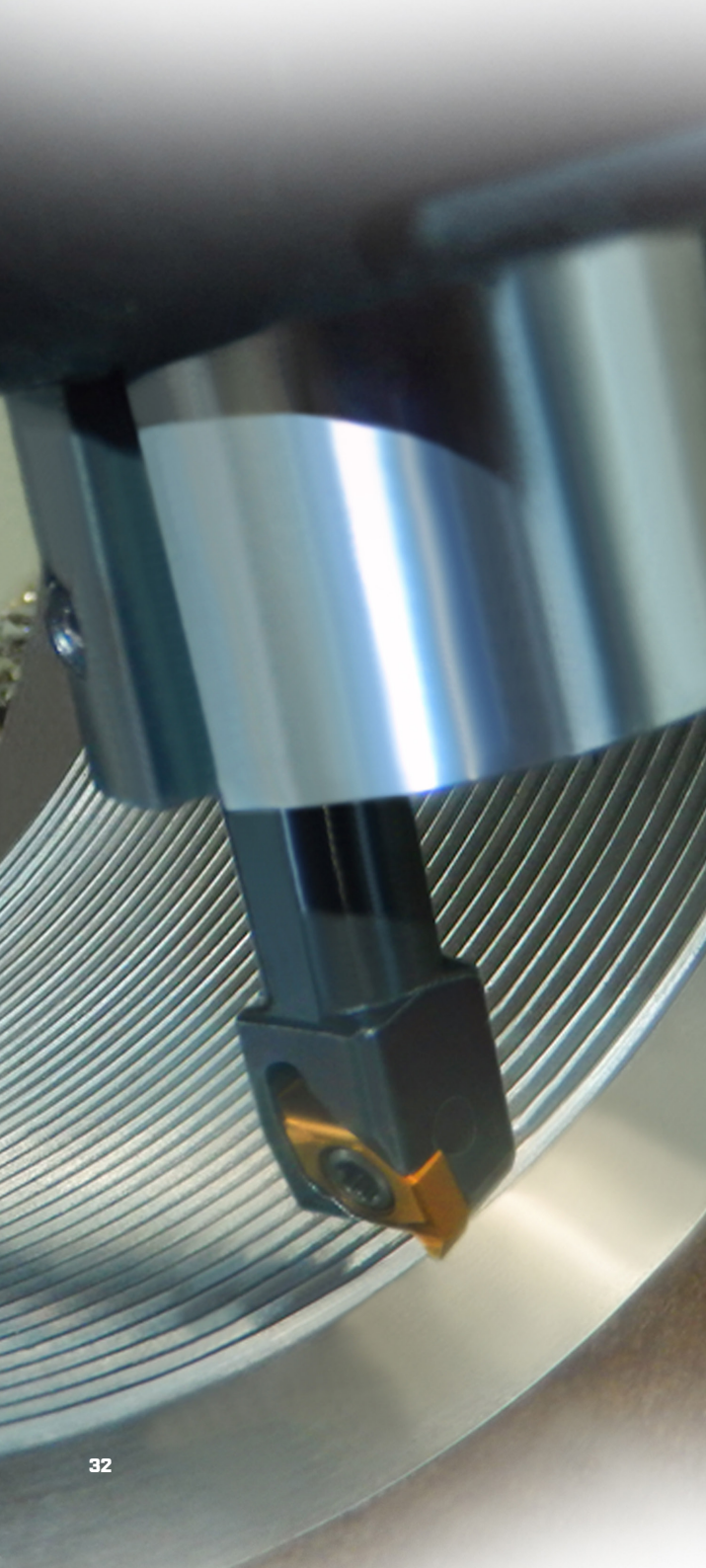
**MFH - MOTORIZED
FACING HEAD**



W53
BORING AND WELDING MACHINE TOOL ...HI TECH

Plus
ESPS
W52
BORING AND WELDING MACHINE TOOL ...HI TECH





WS FULL CNC SERIES

Portable Multifunction Machine Tools

The Ws Full CNC series consists of six models that have all the advantages of the Ws series, enhanced by our control panel with Computer Numerical Control (CNC) that allows extremely precise machining, such as:

- ◆ **CURVILINEAR PROFILES**
- ◆ **CONICAL MACHINING**
- ◆ **BEVELLING AND CHAMFERING OF ANY KIND**
- ◆ **ALL TYPES OF THREADING**
- ◆ **FACING OF SIMPLE AND COMPLEX PROFILE SURFACES**
- ◆ **ANY TYPE OF GROOVE**
- ◆ **PHONOGRAPHIC GROOVING**



WS3 FULL CNC

WORKING DIAMETERS
 Ø 110MM - Ø 600MM (3.94" - 23.62")

AXIAL STROKE
 250 MM (9.84")



WS3 DRAGSTER 800

WORKING DIAMETERS
 Ø 110 MM - Ø 600 MM (3.94" - 23.62")

AXIAL STROKE
 800 MM (31.50")



WS3 DRAGSTER 600

WORKING DIAMETERS
 Ø 110MM - Ø 600MM (3.94" - 23.62")

AXIAL STROKE
 600 MM (23.62")



WS3 DRAGSTER 1000

WORKING DIAMETERS
 Ø 110MM - Ø 600MM (3.94" - 23.62")

AXIAL STROKE
 1000 MM (39.37")



WS5

Ø 180MM - Ø 1000MM (7.09" - 39.40")



WS7 PLUS 3PH

Ø 400MM - Ø 1700MM (15.75" - 66.93")

WS FULL CNC CONTROL PANEL

The CNC control panel has been designed to meet the real needs of CNC lathe operators. The control panel drives a series of motors and guides for the controlled and coordinated movement of the machine's axes, in order to position the tool at the correct location and timing. The main features are:

- ◆ Execution of files created with advanced **CAM** programs, without the need to type command lines.
- ◆ The three modes **FILE**, **JOG**, and **MDI** are fully integrated and can be used together.
- ◆ The **WIZARD SYSTEM**, which eliminates programming in code and simplifies operation.
- ◆ The visualization of a 3D toolpath preview, with zoom functionality to focus on desired details.



TOUCH/REEN CONTROLLER

WS CNC Series Rev 1.0.1

SIRMECCANICA

AXIS POSITION

X: +199.9988 Z: +0.0000

SPINDLE

RPM Set: 0

FEED

PRD: 6.00

MDI

100

6.00

G18 G40 G49 G90 G94 G80

M04 S80

G0 X102.4 Z1.2

F8

G0 X98

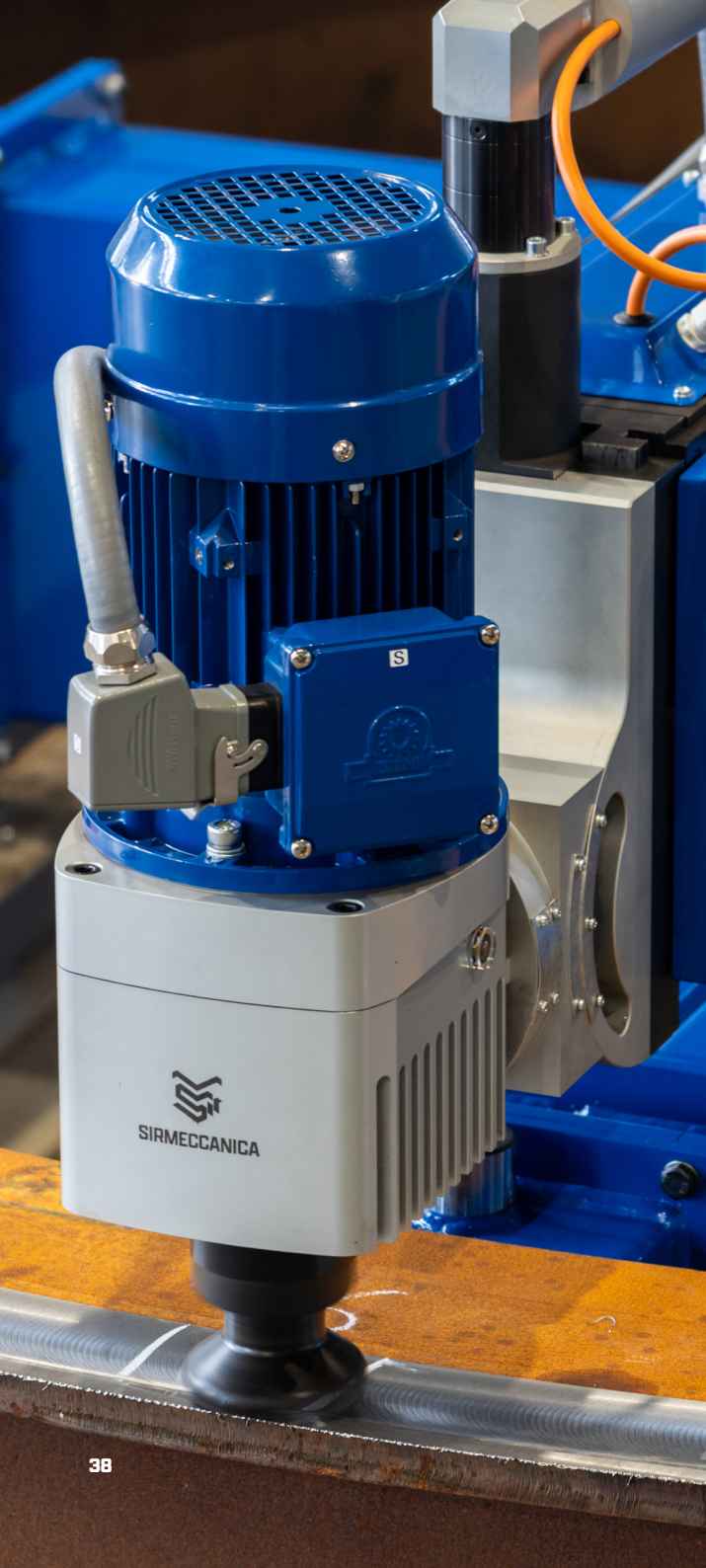
G1 Z-98.9737

C:\Mach3\GCode\Turn.tap

sirmeccanica.com







FMAX SERIES

Portable Flange Facing Machine Tools

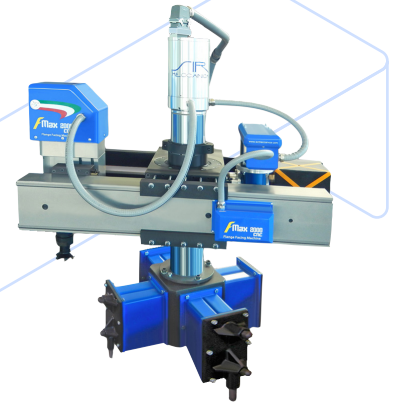
Composed of five different models, the Fmax series of portable facing machines has been designed to perform multiple face machining operations, of flat or multi-level surfaces, on large bodies with axial symmetry having cylindrical cavities with a significant diameter size. These machines are suitable for:

- ◆ **FLANGE FACING**
- ◆ **MILLING**
- ◆ **CHAMFERING**
- ◆ **BEVELING BOTH INTERNAL AND EXTERNAL**
- ◆ **CREATING CONCENTRIC AND SPIRAL-SHAPED CYLINDRICAL GROOVES**
- ◆ **PREPARING EDGES AND CHAMFERS FOR WELDING**



FMAX 800

FACING DIAMETERS
Ø 350MM - Ø 800MM (13.78" - 31.50")



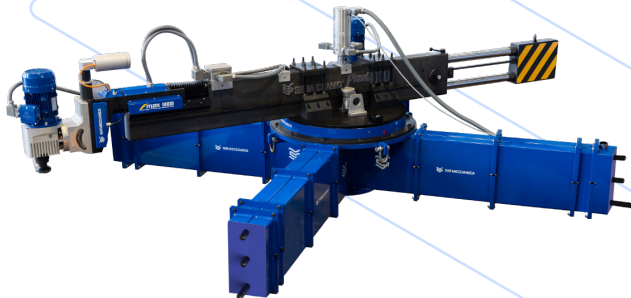
FMAX 2000

FACING DIAMETERS
Ø 500MM - Ø 2000MM (19.68" - 78.74")



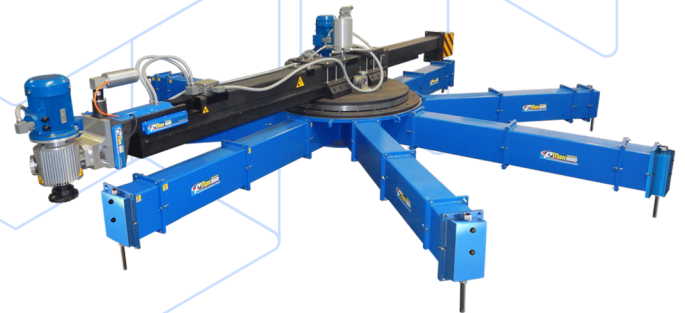
FMAX 3000

FACING DIAMETERS
Ø 1000 MM - Ø 3000 MM (39.37" - 118.11")



FMAX 4000

FACING DIAMETERS
Ø 1500MM - Ø 4700MM (59.05" - 185.04")



FMAX 6000

FACING DIAMETERS
Ø 1900MM - Ø 6000MM (74.80" - 236.22")

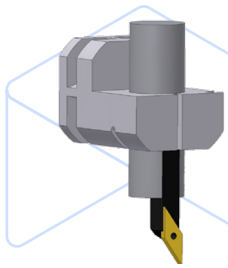


KITS FMAX SERIES

The possibility of using different kits/accessories offers numerous advantages.

Two of the fundamental characteristics of our machine tools are versatility and flexibility.

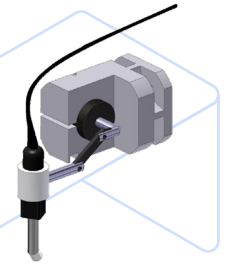
Through our kits/accessories they can adapt to a wide range of processes, without the need for expensive replacements or new installations. Furthermore, the use of kits/accessories increases productivity, reducing setup times and allowing multiple operations without having to change machines.



TURNING KIT



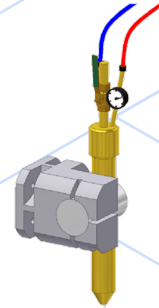
ELECTRONIC INDEXING HEAD



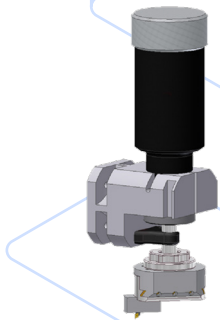
WELDING KIT



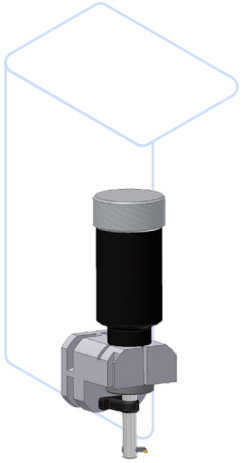
DRILLING KIT



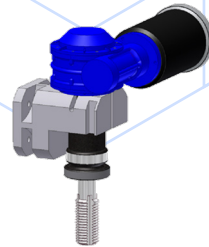
OXYGEN CUTTING KIT



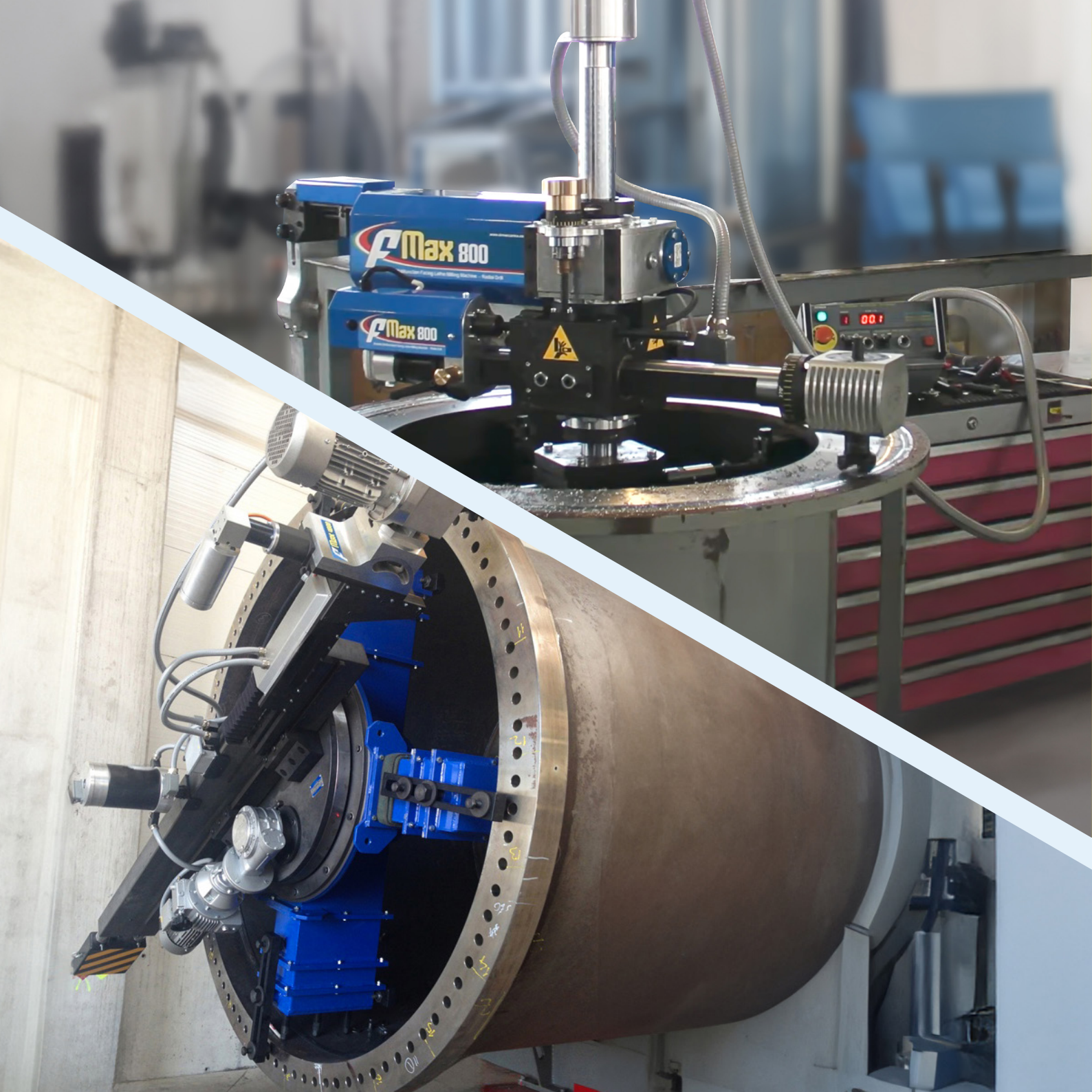
CIRCULAR POCKET KIT



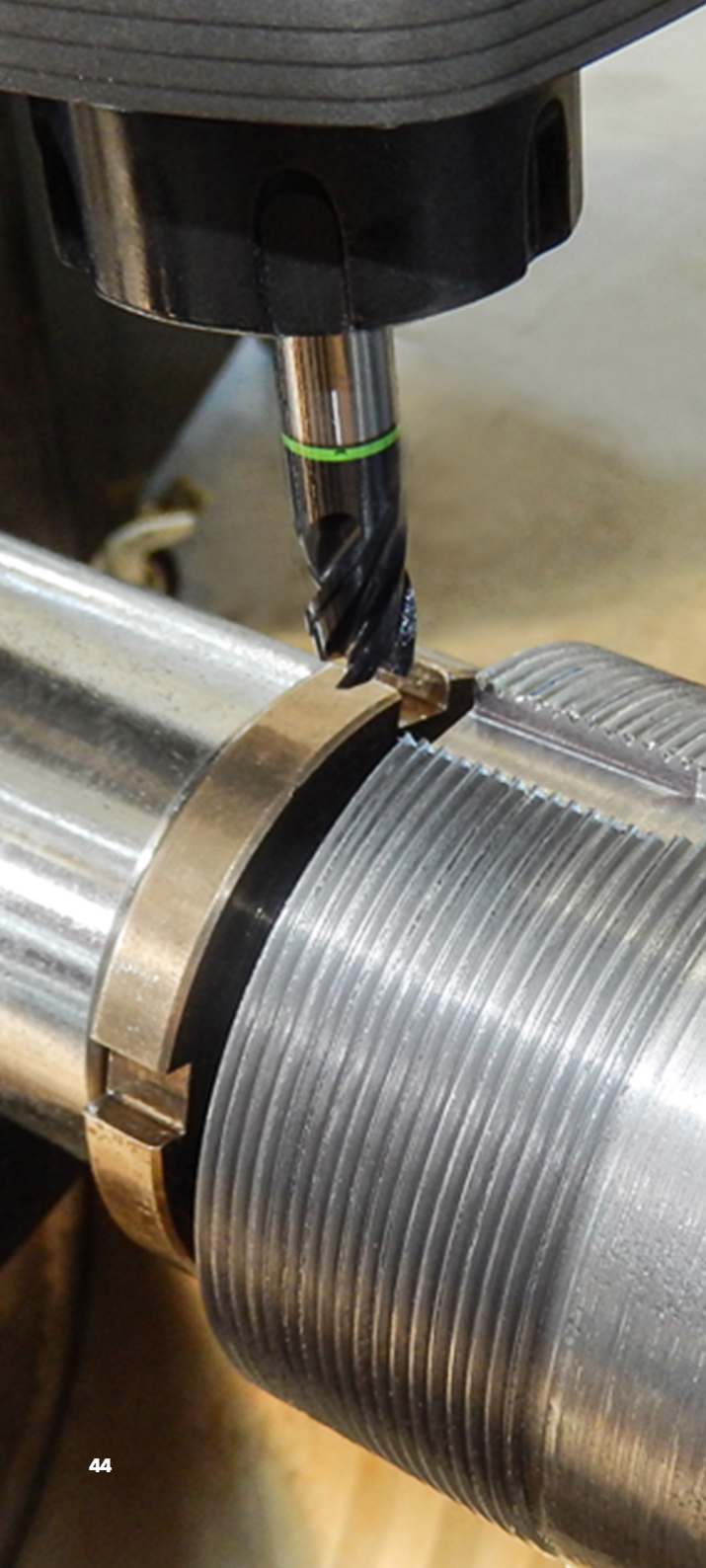
BORING KIT



TAPPING KIT







TOP SERIES

Portable Orbital Lathes

The TOP series has been designed for extremely precise on-site turning operations on extreme external and internal cylindrical faces and surfaces of tubular bodies that are fixed, immovable or impossible to rotate. The TOP series is managed entirely by a CNC control panel. Sir Meccanica's portable CNC orbital lathes perform any geometric profile:

- ◆ **INTERNAL OR EXTERNAL CURVED AND RECTILINEAR INTERPOLATIONS**
- ◆ **STANDARD AND TAPERED THREADING**
- ◆ **SIMPLE AND SHAPED FACING**
- ◆ **MULTI-LEVEL CYLINDRICAL GROOVING**



TOP 200
WORKING DIAMETERS
Ø 200MM (0" - 7.87")



TOP 400
WORKING DIAMETERS
Ø 400MM (0" - 7.87")

TOP CNC CONTROL PANEL

The CNC control panel has been designed to meet the real needs of CNC lathe operators. The control panel drives a series of motors and guides for the controlled and coordinated movement of the machine's axes, in order to position the tool at the correct location and timing. The main features are:

- ◆ Execution of files created with advanced **CAM** programs, without the need to type command lines.
- ◆ The three modes **FILE**, **JOG**, and **MDI** are fully integrated and can be used together.
- ◆ The **WIZARD SYSTEM**, which eliminates programming in code and simplifies operation.
- ◆ The visualization of a 3D toolpath preview, with zoom functionality to focus on desired details.



SIR MECCANICA

TOUCHSCREEN CONTROLLER

File Config Function Clg's View Wizards Operator Plugin Control Help

TOP CNC Series Rev. 3.0.1

SIRMECCANICA

COORDS TOGGLE COORDS TOGGLE HOME

AXIS POSITION

X **+140.0000** X Limit Z **+0.0000** Z Limit

mm IN Toolpost F R ZERO Z

T:0 TD:0 R:0.000

SPINDLE

Dwell SPINDLE ON SPINDLE OFF SPINDLE ON

RPM Set: 0 DRIVE OK

TOOL COORDINATE Diagnostic JOG Mode SHUT DOWN

FEED

FREEDATE % FREEDATE % RESET FREEDATE %

Override % 100 FRO 6.00 MM/s Min 6.00

MDI

JOG

MPG

Velocity

TOOL TOOL No 0 Change Tool

No File Loaded.

Regen

STOP

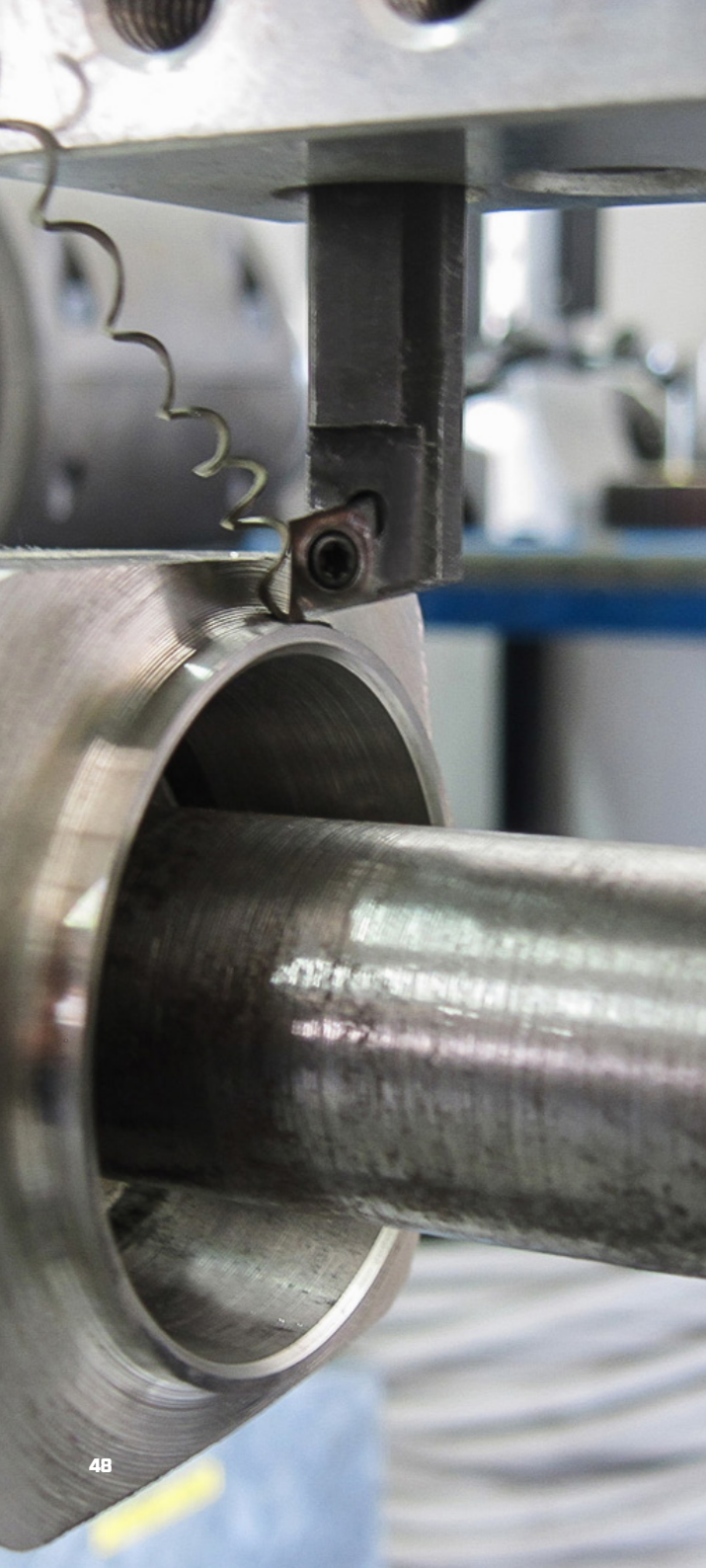
1101 26/07/2023



top 400

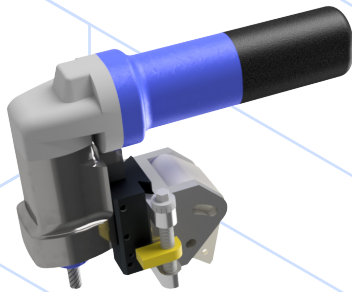
CONTROLLER

sirmeccanica.com

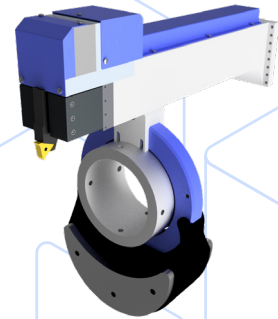


KITS TOP SERIES

The use of different accessory kits on a machine tool offers greater versatility and productivity, allowing different processes without investing in new machinery. The kits/accessories increase efficiency, reduce costs and optimize space, improving the quality and safety of operations. Furthermore, they allow the machine tool to be updated over time, ensuring flexibility and competitiveness in the sector.



KMK - KEYWAY MILLING KIT



LWK - LONG WORKPIECES KIT

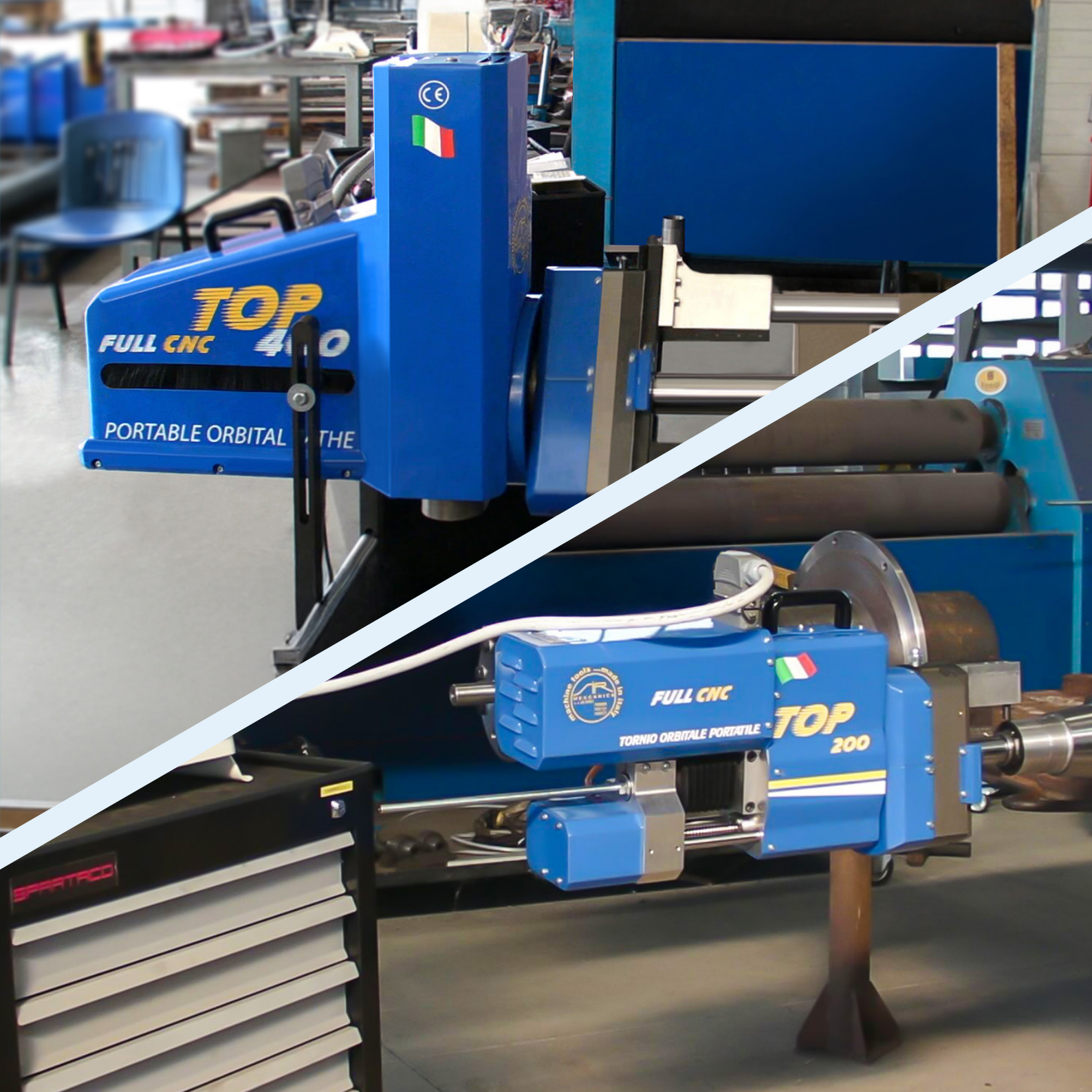



FULL CNC
TORNO ORBITALE PORTATILE

TOP
200

 **TOP**
TORNO ORBITALE PORTATILE


FULL CNC



CE



TOP
FULL CNC 400

PORTABLE ORBITAL LATHE



FULL CNC

TORNIO ORBITALE PORTATILE **TOP**
200

SPARTACO



ROTARY WELDING SERIES

Internal and external overlay welding

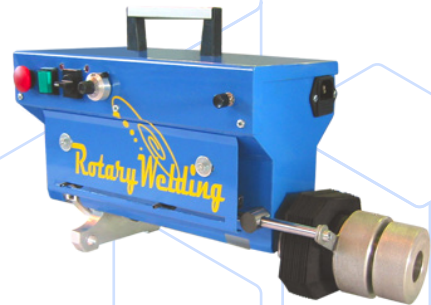
Rotary Welding machine tools are the ideal solution for internal and external overlay welding of tubular bodies. The series consists of two models:

- ◆ the **RW 2010** is the perfect solution for those who need to perform overlay welding exclusively inside tubular bodies
- ◆ the **RW 2014**, powered by a 15V - 6600 mAh rechargeable lithium-ion battery, performs **OVERLAY WELDING** on the **OUTSIDE OF TUBULAR BODIES** with an axial-symmetric geometry



RW 2014

OVERLAY WELDING DIAMETERS
Ø 50 MM - Ø 550 MM (1.97" - 21.65")



RW 2010

OVERLAY WELDING DIAMETERS
Ø 25MM - Ø 400MM (0.98" - 15.75")



RW
BATTERY OPERATED



RW
MECCANICA
RW
BATTERY OPERATED





RSX9

RSX9 800
BORING DIAMETERS
Ø 500MM - Ø 800MM
(19.68" - 31.50")

RSX9 1200
BORING DIAMETERS
Ø 700MM - Ø 1200MM
(27.56" - 47.24")

RSX⁹ SERIES

Boring machine with fixed axle shaft

The RSX⁹ machines are portable electronic precision boring machines for large bodies with cylindrical cavities that develop in length and are not accessible to conventional machines.

These models allow immediate grinding and aligning on large dimensions and on indefinite length, directly on-site. Able to satisfy the highest quality standards, both in terms of geometric tolerances and surface finish, the rsX⁹ machines are adaptable and flexible in any situation.



SM500 SERIES

Linear cutting machine

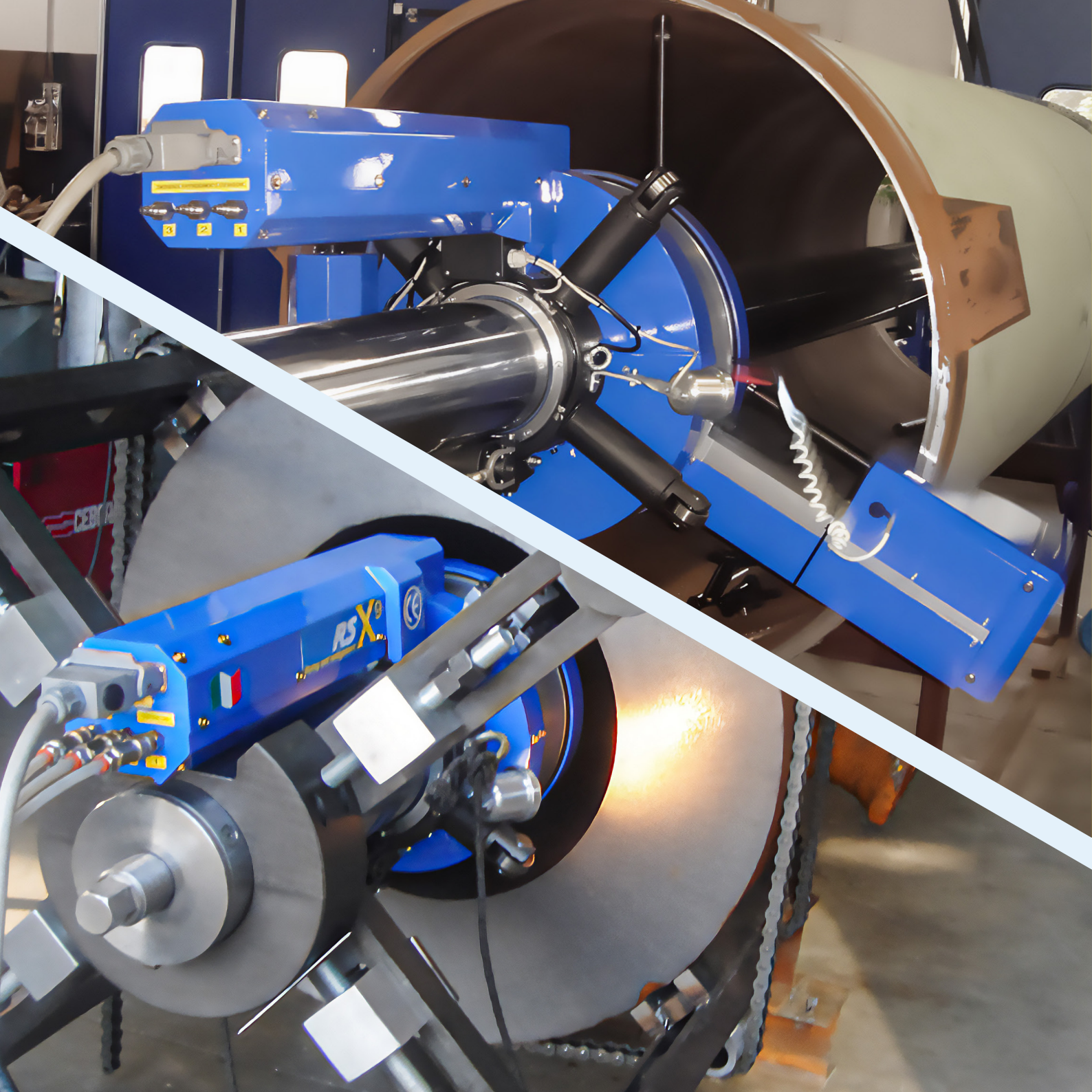
Portable and designed to perform on-site linear cutting machining, the SM500 series is characterized by rapid movements that optimize machining times. Moreover, these machine tools can be installed in any position.

WTMAX SERIES

Portable threading machine tool

The WTMAX are portable and electronically controlled machine tools for internal cylindrical threads. The lengths, pitches, thread diameters and longitudinal stroke are completely customizable according to the specific needs of the customer.







SM500

MECCANICA
POMERANCA
S.p.A.
Via S. Maria Maddalena, 10
37060 Pomerance (Verona) - Italy
www.mecpom.it

SM500
LINEAR CUTTING MACHINE

SM500

SM500 LINEAR CUTTING MACHINE









SIR MECCANICA S.p.A.

HEADQUARTERS Viale Europa, 37
88100 Catanzaro
Italy

PHONE
+39 0961 769696 \ 769734 \ 769672

FAX
+39 0961 769543

EMAIL
sirmecc@sirmeccanica.com

WWW.SIRMECCANICA.COM