

- TOOLS
- SMALL
- MEDIUM
- LARGE

SMA 30 AER

Table edge-milling machine

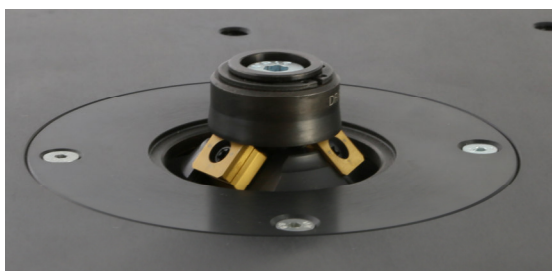
The GERIMA table edge-milling machine SMT 30 AER consists of the motor drive and milling technology of the SMA 30 AER, combined with a stable table frame. The milling head including the guide wheel protrudes from the surface of the table in the middle, so that a simple manual guidance of the workpiece along the milling head and along the guide wheel is ensured. The SMT 30 AER is particularly suitable for the machining of bevels and radii at straight edges, contours and bore holes for small and medium size work pieces.

Advantages

- exchangeable milling heads and carbide inserts for different bevel angles and radii
- 8-fold applicable carbide inserts for bevels and radii
- machining of small and medium size workpieces
- bare metallic bevels ensure a high surface quality
- exact reminding root face
- stable table frame - adjustable in height
- easy handling
- robust and low maintenance

ideal for

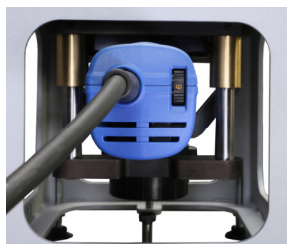
- machine construction
- steel construction
- tool construction
- mould construction
- prototyp construction
- small series production



Milling head with 3 carbide inserts for bevel and guiding roll



Height adjustment



Speed setting

Technical specifications SMT 30 AER	
Bevel width	1-6 mm (steel) 1-3 mm (stainl. steel) 1-8 mm (aluminium)
Bevel angle	0-80°
Radius	1,2-6 mm
Ø guiding roll	26,3 mm (standard) with special milling head Ø 10-24 mm possible
Milling head assembly	3 x KX-insert
Machining area	300 x 250 mm
Spindle speed	2.500-7.900 min-1
Power	1.500 Watt
Weight	approx. 15 Kg
the bevel widths depend on the material and bevel angle	

Technical changes reserved. Liability for printing errors is excluded.