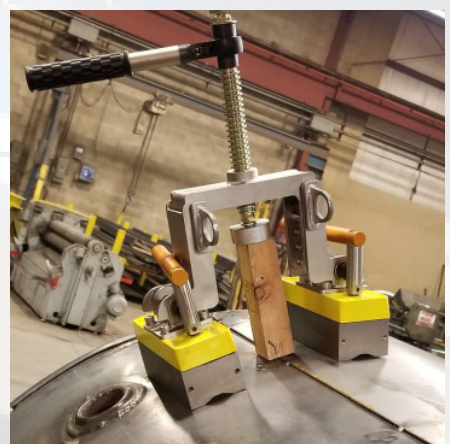
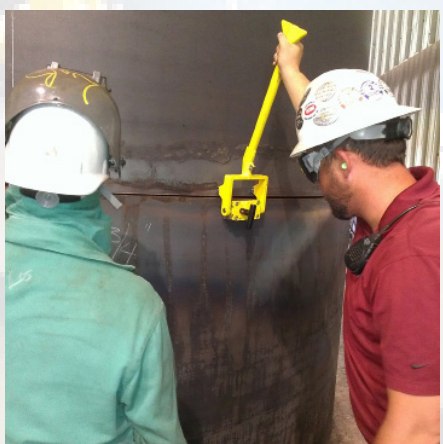




Changing the way things are done.

# Shipbuilding

## Safer, Faster, Stronger!



+1 (303) 468.0662 | [magswitch.com](http://magswitch.com)





81001245

## 1.5 Ton Beam Jack

- Smallest and most compact in this series.
- Eliminates the air gap and allows for easy welding.
- Ideal while working in small confined places.
- Each 1500 lb magnet makes contact with the base material and is turned on by simply actuating two handles. Once the magnets are actuated, turn the ratcheting handle to apply pressure to the beam.



8800605 | 81001171

## 3 Ton / 6 Ton Beam Jack

- Bigger and sturdier beam jack.
- Features a hydraulic jack.
- Each magnet makes contact with the base material and are turned on by simply actuating two handles. Once the magnets are actuated, the hydraulic jack can be pumped.
- Eliminates the air gap and allows for easy welding.
- 6 Ton Beam Jack features a Gimbal Kit (#8800770) where the magnetic feet can conform to uneven surfaces by swiveling 12 degrees in either direction!
- Ideal when you need strong grip on large pieces of steel.



8100503

## 90 Degree Angle 1000

- Features (2) MagSquare 1000 magnets, each with 1000 lb of holding force on each axis.
- With unmatched versatility, you can simply move the magnets up and down or reversible on each axis.
- The slick design also allows for additional MagSquares to be added for extra strength.
- Ideal for positioning stiffener beams.



8100961

## 90 Degree Angle Stiffener 1200

- Robust 90 degree angle tool that is designed for some serious power, stabilization and precision control for those heavy-duty jobs.
- Entire side plate is magnetized when turned on.
- With reinforced end caps for superior durability, this tool mounts to flat and round pieces of steel with incredible strength.
- Ideal for heavy duty jobs.



8100552 | 8100747 | 8100746

## Magnetic Ground Clamps

- Our magnetic ground clamps come with the improved fin design which lowers temperature by 27%!
- With our ground clamps, no more tacking tabs or searching for ground location necessary.
- Simply place our magnetic ground clamp on a clean work surface, turn on and start welding!
- Save precious time and eliminate unnecessary grinding.
- Ideal for fast and easy setup on flat and round surfaces.



8100935

## MagPress

- Aligns large steel sheets with precision.
- Equalize high and low points between steel gaps by placing the magnet on low, pry on high and weld.
- Turn the handle to the side and this tool becomes a beam press which can press a 4-6" beam.
- Holds flat and round surfaces.

## Leveling Accessories



### Sheet Handler

- Remove high/low when aligning plate.
- 100 times faster than using dogs and wedges.
- Center sheet handler over the seam, turn Magswitch ON and press to align and tack.

8100361



### Stiffener Alignment Tool

- Mounts onto MLAY 1000x2 lifting magnet.
- Provides stop for setting up stiffener beams.
- Keeps beams at 90 degrees during fit-up.

8100554



### Beam Press Accessory

- Attaches to MLAY1000x4 or 1000x6 lifting magnet.
- Provides pry point for fitting stiffener beams.
- Easy-carry handle allows for transportation by one or two people.

8100553



### Heavy Sheet Leveler

- Remove high/low during plate fit-up.
- Levels up to 2" thick plate.
- Easy-carry handle.

8100540



*"Using Magswitch shipyard tools saves over 20 hours every week eliminating unproductive fitting and grinding just on one substructure!"*



## **Magswitch Advantages**

- True ON/OFF magnet
- Holds strong on flat or round surfaces.
- Precise placement
- Stays clean
- Exceptional hold on thin steel
- Increases safety, efficiency and speed in shipyards



*We also provide custom product solutions. Ask your sales rep about how to customize a Magswitch product to fit your needs or email us at [customproducts@magswitch.com](mailto:customproducts@magswitch.com)*

## **Magswitch Applications**

- Shipbuilding/Ship Fitting
- Welding & Fabrication
- Lifting
- Drilling & Tapping
- Material Handling
- Mounting
- Woodworking
- Heavy Lifting Frames
- Automation

**Ask us about our other product brochures!**



**magswitch®**

Changing the way things are done.



+1 (303) 468.0662  
 magswitch.com  
 cs@magswitch.com